

MONTHLY MEMBERSHIP PROGRESS REPORT

District 14 A

Results as of: 5/31/2026

GMT:

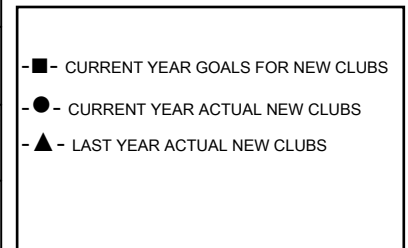
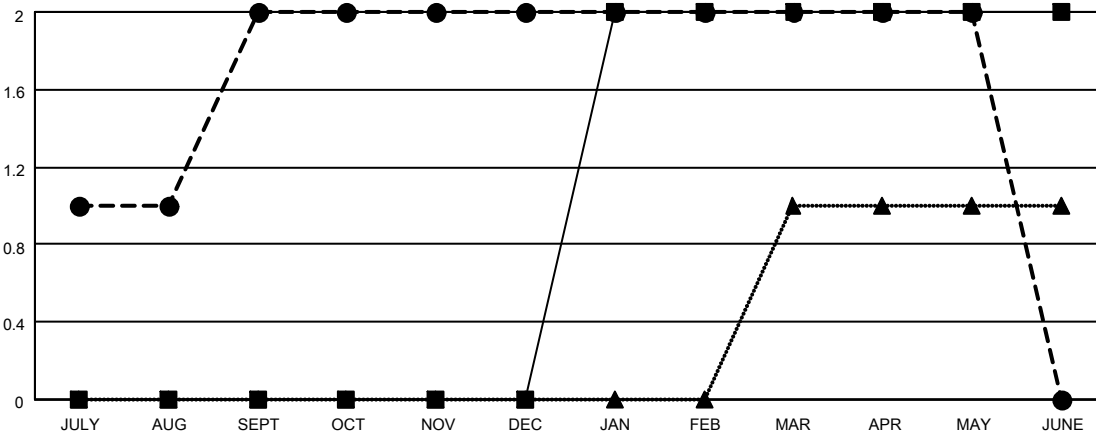
LOCATION PENNSYLVANIA

GMT CA

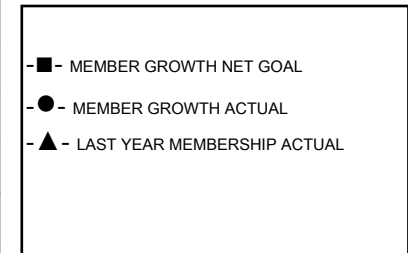
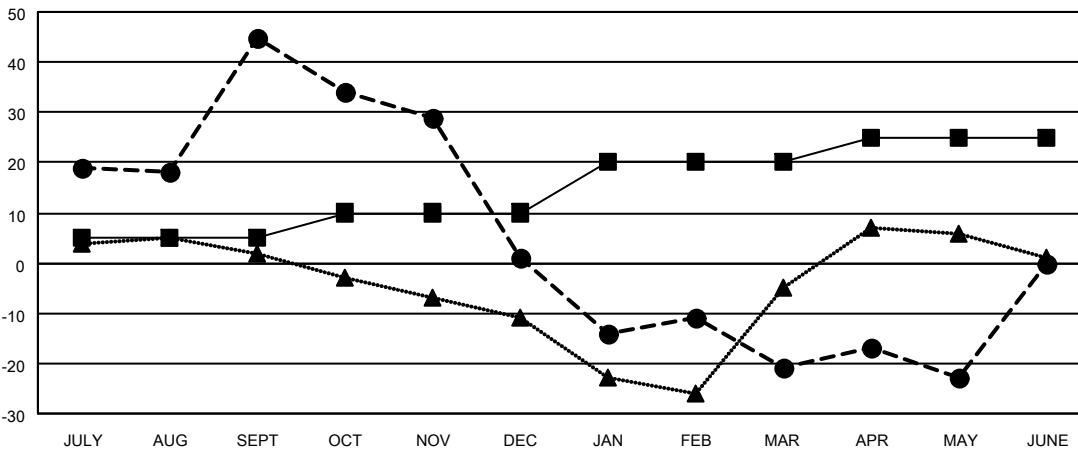
| Clubs | | | |
|-----------------------|---------------|-----------|---------------|
| RESULTS FOR 2025-2026 | | | |
| QUARTER | NEW CLUB GOAL | NEW CLUBS | DROPPED CLUBS |
| JULY/AUG/SEPT | 0 | 2 | 0 |
| OCT/NOV/DEC | 0 | 0 | 2 |
| JAN/FEB/MAR | 2 | 0 | 0 |
| APR/MAY/JUNE | 0 | 0 | 0 |

| Members | | | |
|-----------------------|------------------------|----------------------|--|
| RESULTS FOR 2025-2026 | | | |
| QUARTER | MEMBER GROWTH NET GOAL | MEMBER GROWTH ACTUAL | DROPPED MEMBERS ACTUAL (including transfers) |
| JULY/AUG/SEPT | 5 | 67 | 18 |
| OCT/NOV/DEC | 5 | 14 | 58 |
| JAN/FEB/MAR | 10 | 17 | 38 |
| APR/MAY/JUNE | 5 | 11 | 11 |

GOALS AND ACTUAL NEW CLUBS CUMULATIVE



GOALS AND ACTUAL MEMBERS CUMULATIVE



| | | |
|---|---|--|
| DROPPED CLUBS: 2 | 24 CLUBS OF 54 ADDED 1 OR MORE NEW MEMBERS | GENDER DISTRIBUTION MALE 795 (63.55%) FEMALE 455 (36.37%) |
| DROPPED MEMBERS DECEASED 18 CLUB CANCELLED 24 OTHER 83 TOTAL 125 | CLICK HERE FOR CUMULATIVE MEMBERSHIP DATA | TOTAL FAMILY UNIT MEMBERS 204 FAMILY MEMBERS PAYING HALF DUES 109 |